

C.A.T Accessories

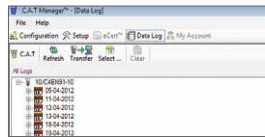
A RANGE OF ACCESSORIES FOR RADIODETECTION'S CABLE AVOIDANCE TOOL SYSTEM

Compatible with C.A.T2™/C.A.T3™/C.A.T4™ and Genny2™/Genny3™/Genny4™ systems

C.A.T Accessories

C.A.T MANAGER

C.A.T4 locators are supported with the dedicated C.A.T Manager software package. This Windows® PC program allows plant, fleet and site managers to minimise down time by performing software upgrades, sending a service request or reproducing calibration certificates.



To match individual preferences or intended use, C.A.T Manager can disable or enable C.A.T4 features such as depth estimation and warnings. User-editable fields enable plant/fleet codes and other details to be stored on e.C.A.T4 units, simplifying records and traceability. Only available for the C.A.T4 range of locators.

Part No: 97/CATMANAGER

ECERT™

This allows the user to validate the calibration of the C.A.T4 without the need to send the unit away. eCert provides the user with confidence that the C.A.T4 is performing to the very same high standards as it did when it first left the factory. Only available for C.A.T4 – Requires C.A.T Manager.



Part No: 10/ECERT

Genny Accessories

GENNY CLAMP

This clamp is used to apply a Genny signal to a specific cable or pipe. This is particularly useful where direct connection is not possible, or on live cables when these cannot be de-energized.

Available in 2" (50mm), 4" (100mm) and 8.5" (220mm) diameters.



Part No. 2" clamp: 10/TC2136-RD4

Part No. 4" clamp: 10/TC1769-RD4

Part No. 8.5" clamp: 10/RD4GT0235

EXTENSION ROD

The 25" (630mm) length, non-conductive, nylon extension rod is used to extend the reach of the Genny clamp or small stethoscope. Multiple rods can be connected together to extend the reach further.



Part No: 10/EXT

LIVE PLUG CONNECTOR (LPC)

This accessory is used to easily apply a Genny signal to a street distribution cable using a standard mains socket. It is available with either a UK or EU style mains plug or a ROW style that comes without a plug fitted. Maximum operating voltage 254Vrms and CAT II rated.



Part No: 10/GG1540-LPC

Part No: 10/GG1540-LPC-EUR

Part No: 10/GG1540-LPC-ROW

LIVE CABLE CONNECTOR (LCC)

This accessory is used to apply the Genny signal to live cables. The Live Cable Connector may only be used by suitably qualified personnel. Maximum operating 440Vrms and CAT III rated.



Part No: 10/AC1231-G33-LCC-2

GENNY CONNECTION KIT

This kit includes the most common Genny connection accessories. It includes a direct connection lead, an earth extension lead, an earth stake and a high-strength neodymium magnet.



Part No: 10/Genny-KIT

EARTH EXTENSION LEAD

This 33' (10m) lead, wound on a convenient spool, is used to extend the direct connection lead earth return connector, when a local earth point cannot be reached or is not suitable.



Part No: 09/GD0859V1

EARTH STAKE

This metal stake is inserted into the ground to provide an earth return path for the Genny signal.



Part No: 04/AC1453N1

NEODYMIUM MAGNET

This high strength magnet can be attached to metallic pipes, street furniture, etc., to provide a convenient connection point for the direct connect lead signal connector.



Part No: 26/F4ME16M4

DIRECT CONNECTION LEAD

This is used for applying a Genny signal directly on to utilities.

Part No: 17/GG1376E5



Storage and transport accessories

SOFT CARRY BAG

This soft bag can hold a C.A.T, Genny and their accessories.

Part No: 10/CAT/GEN2U



Accessories for tracing non-conductive utilities

FLEXITRACE

The FlexiTrace reel holds 164' (50m) or 260' (80m) of small diameter rod. The rod can be energised by a Radiodetection Genny and inserted into pipes as small as 12mm. It is used with a Radiodetection C.A.T to find and trace small diameter plastic pipes etc.



Part No: 10/TRACE50-D
Part No: 10/TRACE50-F
Part No: 10/TRACE50-GB
Part No: 10/TRACE50-NL

Part No: 10/TRACE80-D
Part No: 10/TRACE80-F
Part No: 10/TRACE80-GB
Part No: 10/TRACE80-NL

FLEXROD

The Flexrod reel holds 197' or 394' (60m or 120m) fibreglass rod used for tracing pipes and ducting etc. The rod is used to propel Radiodetection sondes which can be located and traced with a Radiodetection C.A.T.



Part No: 10/FLEXROD60
Part No: 10/FLEXROD120

S13 SONDE

This is a self contained, battery operated sonde, measuring 0.5" x 2.7" (12.7mm x 68mm) with plain end cap. Can be connected to a flexrod, pulled or blown through pipes or ducts. Transmits at 33kHz and can be located down to 7' (2m).

Supplied as a kit to include sonde, 10mm threaded end cap, plain end cap with eyelet, 2 batteries and case.

Part No: 10/S13-33-KIT
Pack of 10 batteries: 04/V393-PACK



S18 SONDE

This is a self-contained, battery-operated sonde, measuring 0.70" x 3.22" (18mm x 82mm). It can be connected to a Flexrod for locating pipes and ducting etc. It transmits on 33kHz and can be normally located to a maximum depth of 13' (4m).

Part No: 10/S18/82-33-000



SLIM SONDE

This is a self-contained, battery-operated sonde, measuring 0.86" x 7.79" (22mm x 198mm). It can be connected to a Flexrod for locating pipes and ducting etc. It transmits on 33kHz and can be normally located to a maximum depth of 11.5' (3.5m).

Part No: 10/SD0322-33R



STANDARD SONDE

This is a self-contained battery operated sonde, measuring 1.53" x 4.13" (39mm x 105mm). It can be connected to a flexrod for locating pipes and ducting etc. Available in 3 frequencies with a locate depth of 16" (5m).

512Hz Part No: 10/SC0412-512
8kHz Part No: 10/SC0412-8
33kHz Part No: 10/SC0412-33R



SEWER SONDE

This is a self-contained, battery-operated sonde, measuring 2.51" x 6.61" (64mm x 168mm). It can be connected to a Flexrod for locating pipes and ducting etc. It transmits on 33kHz and can be normally located to a maximum depth of 26' (8m).

Part No: 10/SA0337-33R



SUPER SONDE

This is a self-contained, battery-operated sonde, measuring 2.51" (64mm) x 12.51" (318mm). It can be connected to a Flexrod for locating pipes and ducting etc.

It transmits on 33kHz and can be normally located to a maximum depth of 49.2' (15m).

Part No: 10/SB0338-33R



RANGE OF SONDE ACCESSORIES

Radiodetection has a wide range of accessories for sonde products including connectors for connecting onto rods/drain pipes with various size fittings. Please see the sonde user guide on the Radiodetection website or contact Radiodetection for more information.

SPX

Radiodetection Ltd. (UK) Western Drive, Bristol BS14 0AF, UK

T: +44 (0) 117 976 7776 F: +44 (0) 117 976 7775 E: rd.sales.uk@spx.com www.spx.com www.radiodetection.com

© 2013 Radiodetection Ltd. – SPX Corporation. All rights reserved. Radiodetection is a subsidiary of SPX Corporation. SPX, the green ">" and "X" are trademarks of SPX Corporation, Inc. Radiodetection, C.A.T and Genny are trademarks of Radiodetection Ltd. Due to a policy of continued development, we reserve the right to alter or amend any published specification without notice. This document may not be copied, reproduced, transmitted, modified or used, in whole or in part, without the prior written consent of Radiodetection Ltd.

90/ACC-CAT-ENG/03